

SAVE THE DATE



Exhibition Opening

» THE DUST OF LIFE – ON THE FRONTS OF FRAGILITY «

When: Thursday, 18 January 2018, 7 pm

Where: 百合 China Centre / Donauvision Seminar Centre, Hirschengasse 10), 1060 Vienna, Austria

The artist will be present.

With THE DUST OF LIFE – ON THE FRONTS OF FRAGILITY, the Baihe 百合 China Centre for Language and Culture presents 11 large-format works on canvas by the autodidact artist S. Patrick Murphy at its new location from 18 Jan. – 02 March 2018. This will be Murphy's first solo exhibition in Vienna and the artist will be present at the exhibition opening on January 18th.



"No Title", 2013
Acrylic on canvas, 80 x 100 cm



"No Title", 2017
Acrylic and metal leaf on canvas, 70 x 100 cm

THE DUST OF LIFE features a selection of primarily abstract paintings from Murphy's compositions that contrast and juxtapose both the frailty and beauty he came to witness in the most volatile corners of the world. As a security expert for international peacekeeping missions, Murphy was deployed to danger zones in countries such as Sudan, the Democratic Republic of the Congo, Chad, Iraq, the Central African Republic and Papua New Guinea. The inner images that manifested during his professional life **ON THE FRONTS OF FRAGILITY** are the basis for Murphy's artistic work and express these areas of conflict in a delicate yet expressive way.

The exhibition includes paintings from all stages of the artist's creative career – beginning with works that were created shortly after his deployment to Syria, as well as ones that radiate the years spent in Darfur and Abéché.

The reverberation of these experiences on canvas will be shown in Vienna for the first time. The featured selection of works reflects both the artist's personal and aesthetic development, while some of his more recent paintings echo man's influence on the world in general as well as the resulting impact on social environments.

With its relocation from the 21st to the 6th Viennese district at the end of 2017, the **BAIHE 百合 CHINA CENTRE FOR LANGUAGE AND CULTURE** seeks to expand the symbolic significance of Baihe 百合 by now also presenting art that transcends cultural boundaries.

"The decision to showcase work by S. Patrick Murphy at the new location marks the Centre's mission to collaborate across cultures, while demonstrating the catalytic effect that an exciting synergy can have on culture and the arts," explains Lisa Rock, Managing Director of the China Centre.

FURTHER INFORMATION

For further information about the artist and the exhibits, please contact:
Emma Vincent | info@pli.vc | +43.699.121 66 212

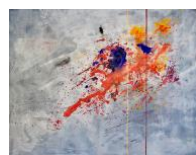
Contact person for the China Centre / Donauvision Seminar Centre and training room rental:
Lisa Rock | lisa.rock@chinazentrum.at | +43.1.890 62 69

IMAGES

Selection of 4 works presented at the exhibition | 2 photos taken during deployment by S. Patrick Murphy



"The Home of the Free Man", 2004
Acrylic on canvas,
100 x 120 cm



"No Title", 2013
Acrylic on canvas,
80 x 100 cm



"No Title", 2017
Acrylic and metal
leaf on canvas,
70 x 100 cm



"C₃H₈NO₅P", 2017
Acrylic, ink and felt-
tip pen on canvas,
100 x 100 cm



"Haboob in Khartoum, Sudan"
© 2007 S. Patrick
Murphy



"Refugee camp in Gaga, Chad"
© 2009 S. Patrick
Murphy

© Image description & photo credits in each photo file name | High-res. download link: [SPMurphy_Images.zip](#)

ABOUT THE ARTIST

S. Patrick Murphy (b. 1969) is an Austro-British autodidact painter. As a security expert for various UN Missions, the International Criminal Court, EU CSDP or the Danish Refugee Council, he has lived and worked in Kosovo, Israel, Syria, Sudan, Uganda, the Democratic Republic of the Congo, Chad, Iraq, the Central African Republic as well as Papua New Guinea, to only name a few. In his art, Murphy mostly captures and assimilates the impressions and encounters gained during his years in stunningly beautiful yet hardship pockets of the world. His mostly abstract works are both testimony and catharsis.

www.patrickmurphyart.com

ABOUT THE BAIHE 百合 CHINA CENTRE / DONAUVISION SEMINAR CENTRE

The Baihe 百合 – China Centre for Language and Culture, founded in 2011, is a cultural exchange platform that offers intercultural trainings, German language courses for Chinese and Chinese courses for everyone. By combining cultural activities and educational programmes, the centre has dedicated itself to deepening the understanding and appreciation of Chinese culture.

www.chinazentrum.at

VISITOR INFORMATION

As of 19 January 2018, the exhibits can be viewed during the Centre's regular opening hours:
Mon-Fri from 9am to 2pm, as well as by appointment. **Free admission.**

Address:

百合 China Centre / Donauvision Seminar Centre, Hirschengasse 10, 1060 Vienna, Austria

How to get there:

Underground lines: U3, U4, U6 | Bus lines: 14A, 57A

Facebook: [Chinazentrum](#) as well as **Facebook:** [Donauvision](#)